



## Swapnil Ashok Patil



Engineering optics lab,  
Department of MAE, C210



me21resch01003@iith.ac.in

## Bio-sketch

---

I am pursuing my Ph.D. in the mechanical and aerospace engineering department at IIT Hyderabad under the guidance of Dr. Syed Khaderi and Prof. Ramji Manoharan.

## Educational Details

---

### Ph.D (Mechanics and Design)

Indian Institute of Technology, Hyderabad  
Pursuing

### M. Tech (Design Engineering)

Vishwakarma Institute of Technology  
Graduated Sep 2020

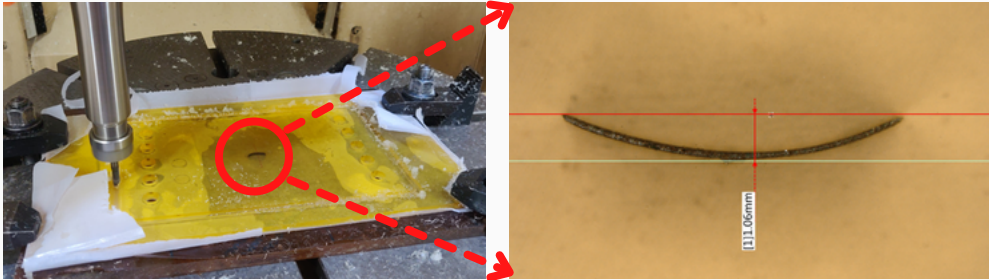
### B.E (Mechanical Engineering)

Savitribai Phule Pune University  
Graduated June 2016

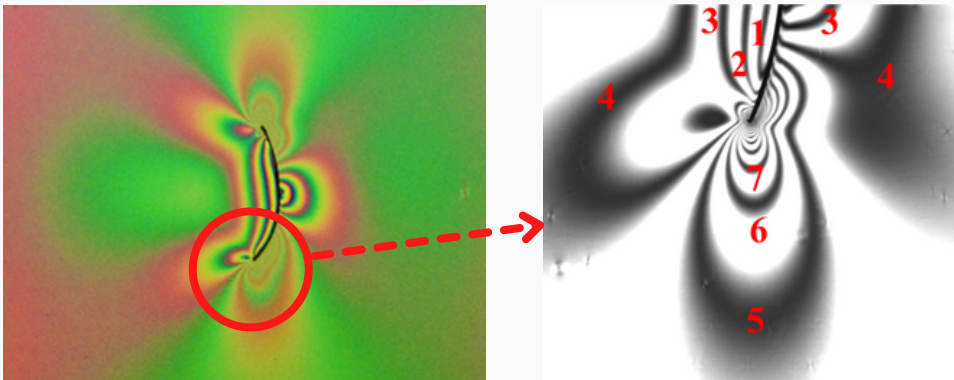
# RIGID CURVED INCLUSION

My current research focuses on fundamental fracture studies related to inclusions and multi-material singularities.

## Fabrication of Specimen

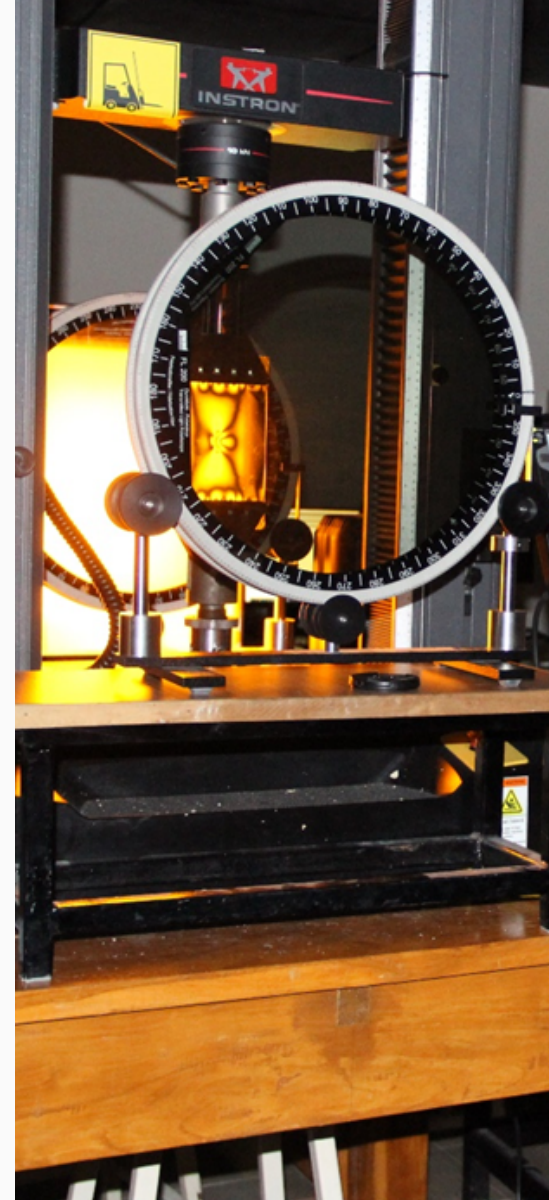


## Dark Field Isochromatic



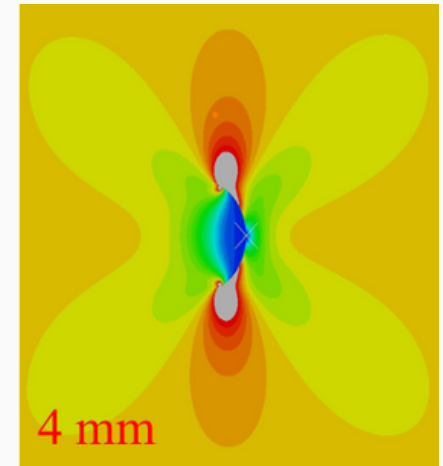
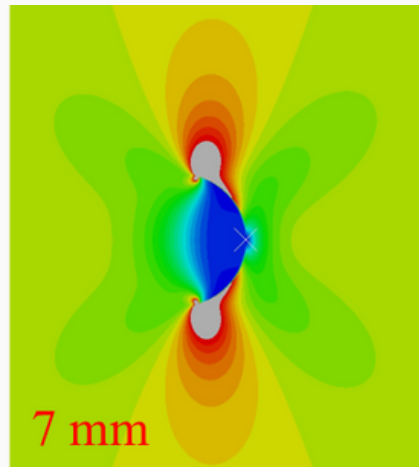
White Light

Monochromatics Light



# NUMERICAL STUDIES

## Tresca Stress Contours



## Fringe contours plotted from FEA

